



# STRUZON<sup>®</sup>

## TECHNOLOGIES

[www.struzon.com](http://www.struzon.com)

# TABLE OF CONTENTS

Introduction .....	03 - 04
Steel Detailing .....	06
Estimation .....	07
Material take Off .....	07
Connection Design .....	07
BIM 3D Modelling & ABM .....	08
Drawings & Reports .....	08
Projects .....	09
Sample Dwgs .....	10 - 13
Contact Us .....	14



## WHOM **WE ARE**

We are a team of highly qualified engineers & detailers who specialized in Structural Steel Detailing, Connection Design, Piperack Detailing , Miscellaneous Steel Detailing (Stairs, Ladders, handrails & others) and speciality metals works like aluminum and stainless steel which makes us one of the prominent service providers in this field.

We make ourselves to have our business based on two strong principles.....

**"MAKE A CUSTOMER & NOT A SALE"**

**"QUALITY OF JOB IS IMPORTANT  
RATHER THAN QUANTITY OF JOB "**



## WHAT WE DO

We have firmly established ourselves as a leader in providing cost-effective and innovative engineering solutions with the principles of honesty, integrity, transparency and safety. We provide a full range of project management, design and engineering services. With the right blend of proactive youth and versatile experience we offer detailing services for any structure built with steel with our belief of “we built what you want”.

Our qualified and dynamic team of checkers, modelers and detailers have successfully executed number of projects for our clients in US , Canada, UK , Europe ,Middle East & India. We enable our clients to outperform their competition and stay ahead of the competition by strongly obsessed to deliver quality services within a stipulated time period.

We are accomplished and flexible to handle various requirements of our clients to expedite fabrication in accordance with various international standards such as AISC, CISC,BS, IS code and OSHA.

Also we exercise high secrecy while handling the information shared by our esteemed clients and realize the sensitivity and significance of the data shared with us.

# UNIQUE EXPERIENCE

We script new success story with each new structure we detail, which is delivered with an undivided attention to quality and on time. We proudly affirm that we are one-stop solution for architectural and structural steel detailing solutions in the construction segment.

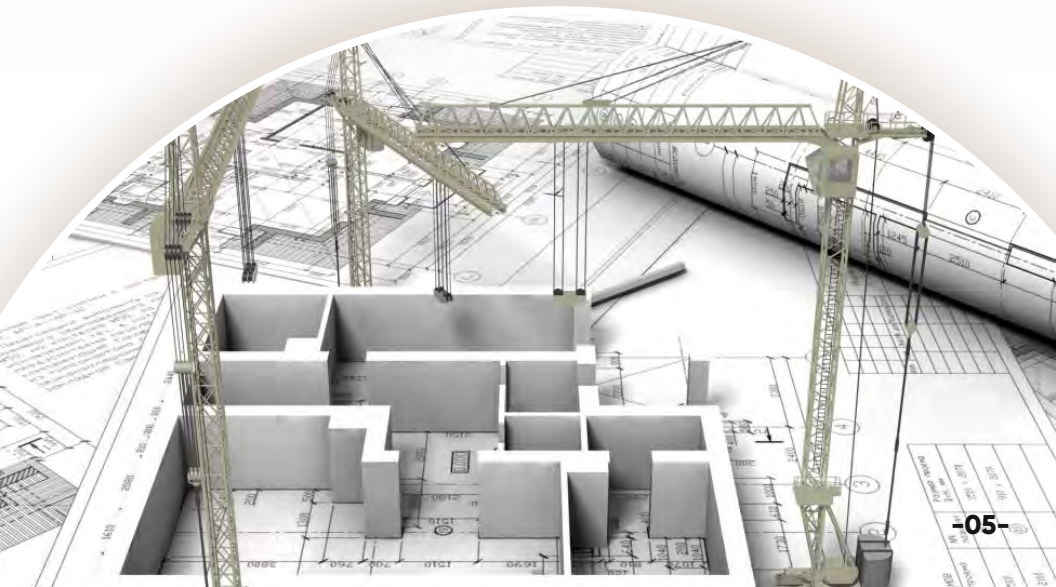
## We Are Providing The Services For The Construction Of

### INDUSTRIAL STRUCTURES

Conveyor Systems  
Plate Work & Duct Work  
Platforms & Bridges  
Power Stations  
Dewatering Pump Stations

### HIGH RISE BUILDINGS

Schools & Colleges  
Hospitals & Churches  
Shopping Malls &  
Convention Center's  
Airport & Stadiums  
Parking & Storage Sheds

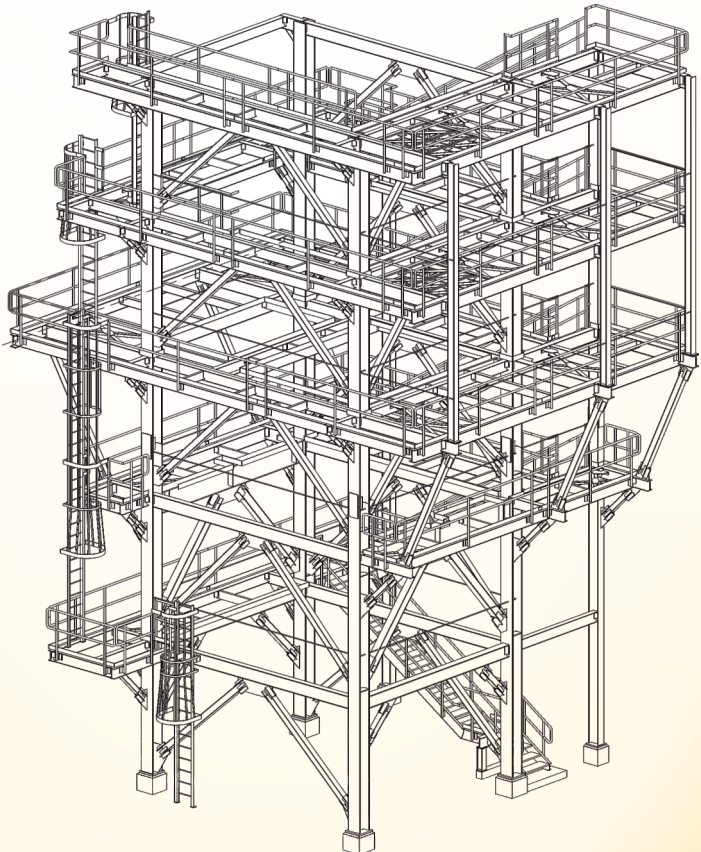


# STEEL DETAILING

Our detailing process has taken an advanced approach to detailing structural, miscellaneous steel and joists which makes the detailing simplest & most cost effective to fabricate steel that are easier, faster and safer to erect. We continue to strive to set standards in the steel detailing industry.

We are aware that more precious time would be wasted if the RFI's we raise are irrelevant, incomplete or lack clarity. Since our teams have the right exposure and experience on the jobs, they go through the design documents carefully to understand the design intent before raising an RFI.

**We offer detailed plans,  
drawings and other  
documents for the  
manufacture and  
erection of steel members  
(columns, beams,  
braces, trusses, stairs,  
handrails, joists, metal  
decking, etc.) used  
in the construction of  
buildings..**



# ✓ ESTIMATION

We provide great assistance to clients on estimation services to make sure of accuracy based on specific man hour cost and item method.

There is no guess work in our estimation or our performance. We provide competitive bids on all types of projects.

We have a specified skillset of manpower who are familiar and well experienced on estimating various commercial, industrial and miscellaneous jobs.



# ✓ MATERIAL TAKE OFF

Provide assistance to clients on bid stage by providing complete manual take off report services based on their requirement which includes but are not limited to the information such as man hours, labor requirements, weight of steel, consumption of welding, qty of bolts, basic operational requirements in shop etc ...

Above said initial take off reports are very useful for the clients to make their cost on bid without have any slip on any trade

# ✓ CONNECTION DESIGN

We offer to provide the Connection Design services to our clients. We have versatile experience of preparing connections to suit design aspects as well as erection or fabrication feasibility. Our experience of working on various structures from commercial to industrial buildings put us at distinguished heights on this aspect.

Based on request/requirement, we will certify our connection design as well by licensed structural engineer of that particular province.

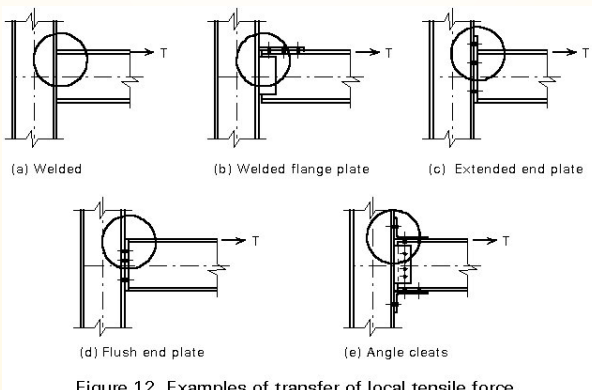
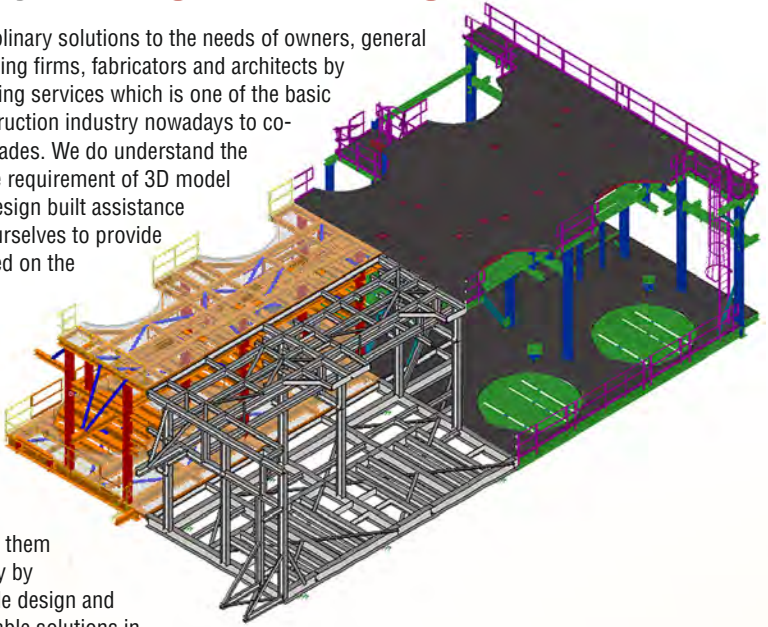


Figure 12 Examples of transfer of local tensile force

# ☑ BIM/3D MODELLING

We offer multi-disciplinary solutions to the needs of owners, general contractors, engineering firms, fabricators and architects by providing BIM modeling services which is one of the basic requirement of construction industry nowadays to co-ordinate with other trades. We do understand the need of clients on the requirement of 3D model of a structure for a design built assistance and we committed ourselves to provide such 3D models based on the design inputs.

Complete advanced bill of materials report at the starting stage of the job with perfection is imperative for the clients to make an order and we provide them with at most accuracy by validating the available design and assuming the acceptable solutions in advance.



# ☑ DRAWINGS & REPORTS

Our experienced and qualified work input will be turned out to be a préised output and we will provide the following dwgs to the clients.

- Anchor Bolt Setting Plan Arrangements and Anchor Rod & Template details
- Concrete Embeds Layouts and Details.
- All types of Columns, Beams and Bracings.
- All types of Steel Trusses.
- All types of Stairs & Ladders
- All Types of Handrails and Guardrails Layouts and Details.
- Gratings and Floor Plates Layouts and Details.
- Single part drawings /Gather Sheets preparation.

As we are well aware that software reports are imperative to facilitate the fabrication process, we will provide the following meticulous reports.

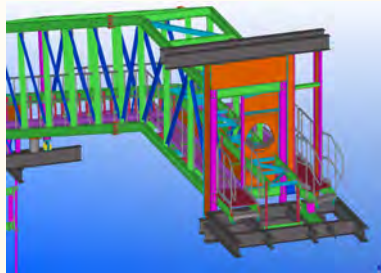
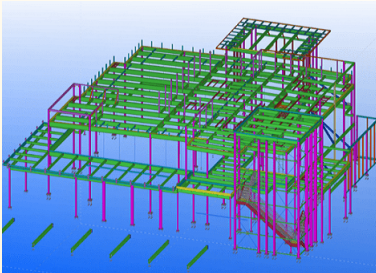
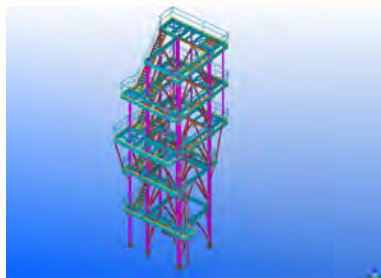
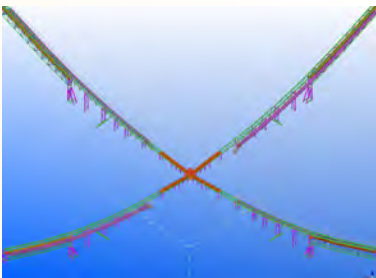
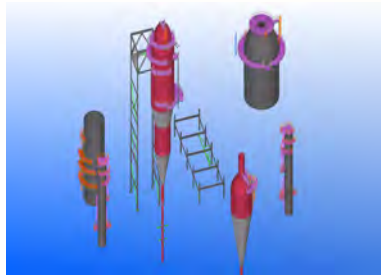
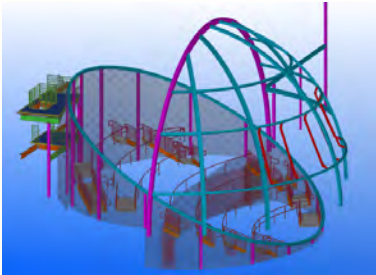
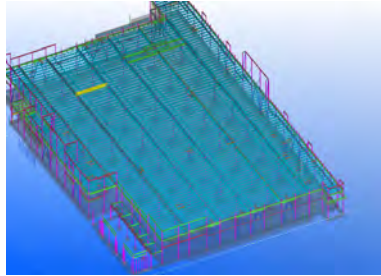
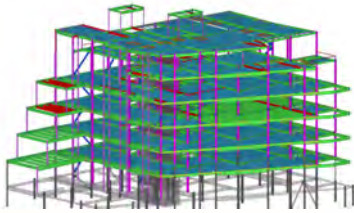
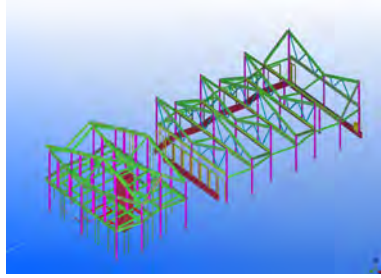
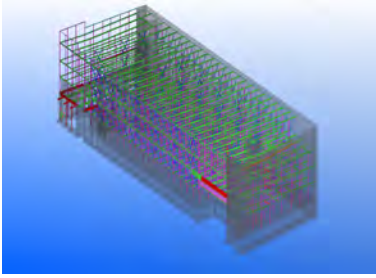


We also provides the fasteners reports to facilitate easy erection process.

- Bolt Summaries for Shop & Field Bolts.
- Point to Point Bolt summary.
- Bolt summaries by Area / Sequence.



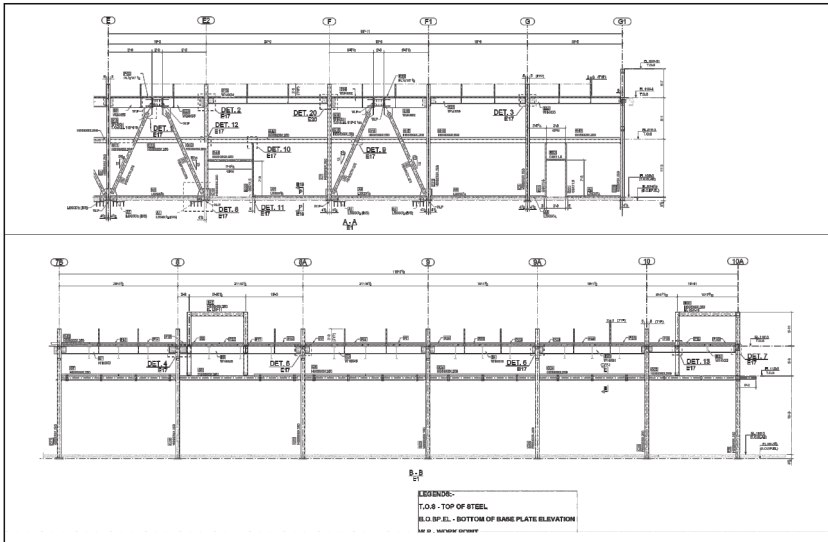
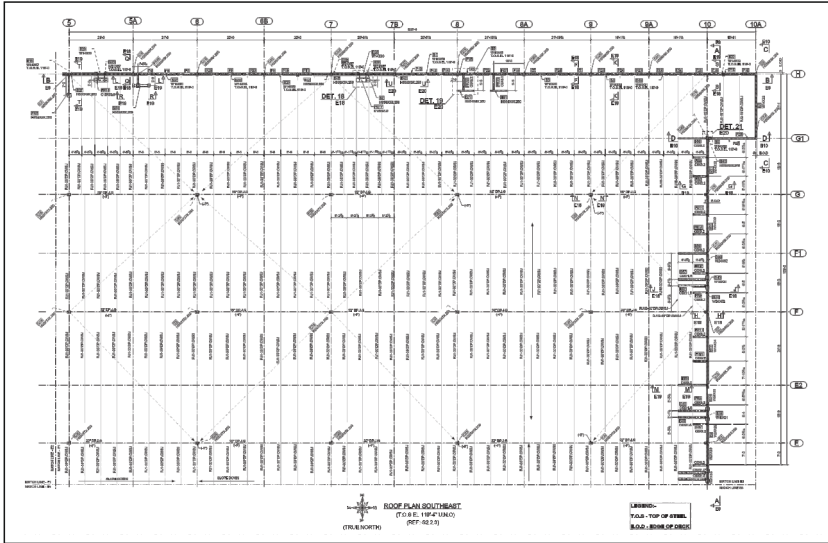
# ☑ PROJECTS



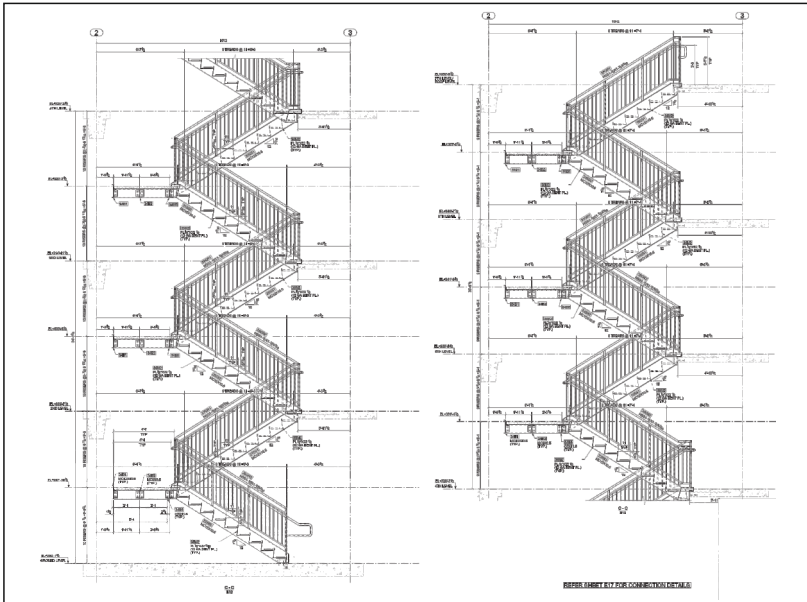
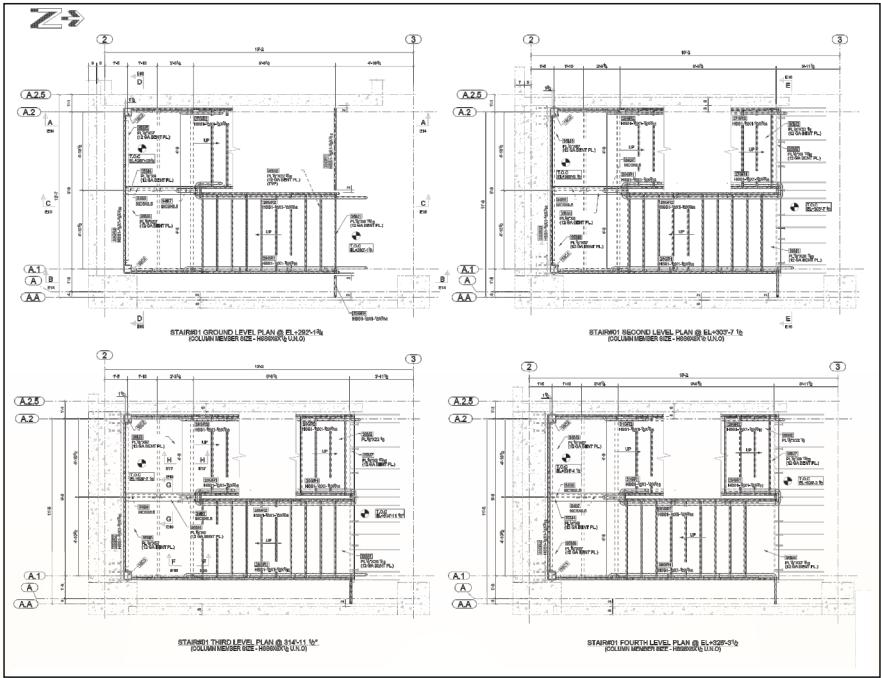




# ☑ DWG SAMPLES

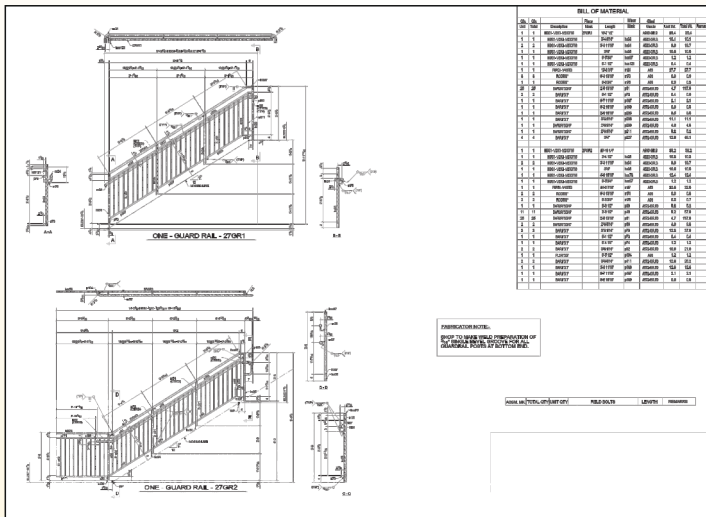
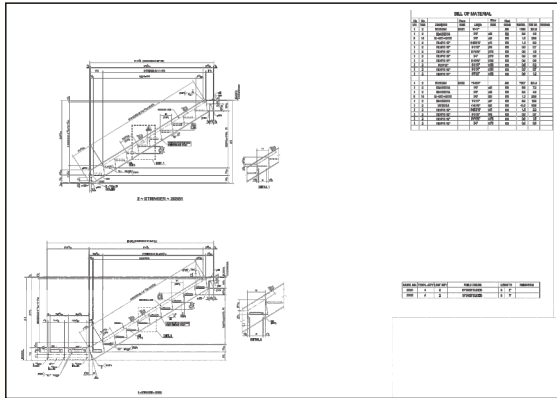
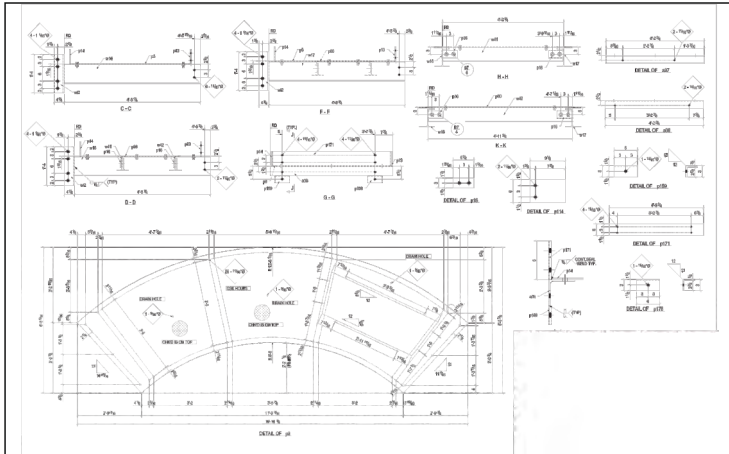


# ☑ DWG SAMPLES





# ✓ DWG SAMPLES



# MANAGEMENT & SUPPORT

- Engineering representative available in Canada to support on USA & Canada Business hours.
- Our Director for Business Development is available in USA to Support/Visit clients at any time.
- Headed and managed by the Indian operation with three experienced professionals (CEO, COO & President) and all of them had 15+ years of unique experience in steel detailing

## REACH US BY

### **STRUZON® TECHNOLOGIES INC:-**

19W,34TH STREET,SUITE-1018  
NEWYORK-10001.

+1 (404) 9026781 (USA)

+1 (646) 9923825 (USA)

### **STRUZON® TECHNOLOGIES PVT LTD :-**

#43B, GKD Nagar, Nehru Nagar West,  
Coimbatore - 641 014 (Corporate Office).

+91 422 4530403 (INDIA)

+91 98441 16111 (INDIA)



Email: [info@struzon.com](mailto:info@struzon.com)

Web : [www.struzon.com](http://www.struzon.com)

